



**InSySPo**

Innovation Systems, Strategies and Policy

**Winter school 2024**

# SÃO PAULO ADVANCED SCHOOL ON TECHNOLOGY & INNOVATION STRATEGIES AND POLICIES FOR ECONOMIC DEVELOPMENT



June - July  
**24th - 5th**



Campinas - Brazil  
**Unicamp**



**UNICAMP**

# SÃO PAULO ADVANCED SCHOOL ON TECHNOLOGY & INNOVATION STRATEGIES AND POLICIES FOR ECONOMIC DEVELOPMENT

## PARTICIPANT BOOKLET

June 24th to July 5th. University of Campinas  
Campinas, São Paulo, Brazil

The São Paulo Advanced School is part of a series of events planned and promoted by the São Paulo Excellence Chair – Innovation Systems, Strategies and Policies (InSySPo) supported by the São Paulo Research Foundation (FAPESP).

<https://www.ige.unicamp.br/insyspo/>

<https://www.ige.unicamp.br/insyspo/winter-school-on-technology-innovation-strategies-insyspo-unicamp/>

# Introduction

The “São Paulo Advanced School on Technology & Innovation Strategies and Policies for Economic Development” (SPAS) aims at debating contemporary themes that have guided innovation policies and strategies around the globe, offering concepts and tools enabling students to analyse and evaluate such policies in different contexts. The intense interaction between teaching staff and SPAS participants in the time span of two weeks is intended to enhance knowledge and understanding and to create enduring relationships.

This booklet contains important information about the conduct of this SPAS including programmatic issues, location of the activity, accommodation, transportation, and the coverage of your expenses.

**Important!** Please keep in mind that, besides the long-distance air travel ticket that will be arranged centrally, you will receive the rest of your financial support via a one-time bank transfer. This will allow you to manage all necessary expenditures during your visit including accommodation, local transportation and meals.

The program is divided into (a) plenary Core Lectures (first week) that will be attended by all students; (b) Intensive Courses in two different tracks (second week) where students choose the track they wish to follow; (c) Roundtables with several discussants (first and second weeks); and (d) Extracurricular activities and visits (first and second weeks). The Intensive Course track of your choice guarantees a seat – however, should you wish to attend some of the parallel presentations and sessions in the other track, you will be welcome to do so assuming adequate space. The full schedule will be added later to this booklet and sent to all SPAS participants.

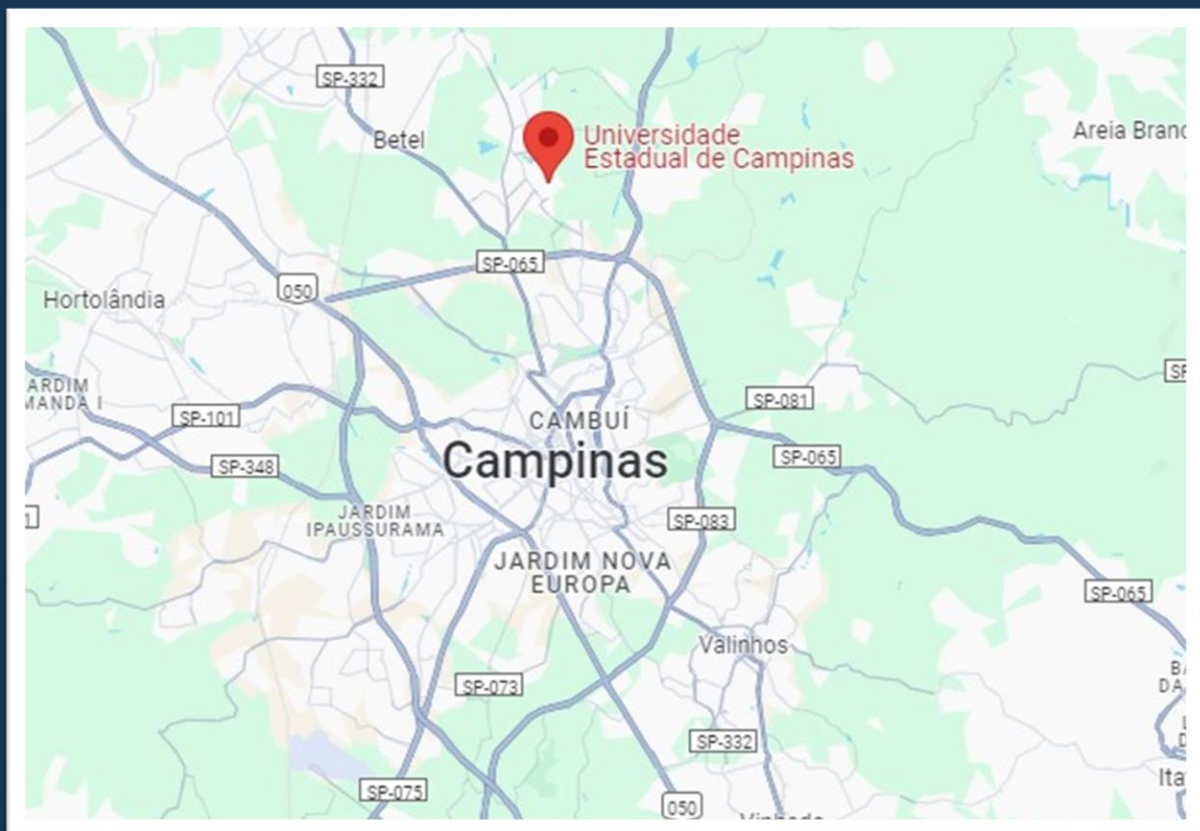
# Table of Contents

Campinas and Barão Geraldo .....	5
Arriving at UNICAMP .....	6
The Campus of the University of Campinas.....	7
Accommodation.....	9
Transportation.....	11
Your Fellowship.....	12
Contact information.....	13

# Campinas and Barão Geraldo

The main campus of UNICAMP is located in Campinas in the state of São Paulo, in a district called Barão Geraldo. Barão Geraldo is about 25 minutes by car or 45 minutes by bus from downtown Campinas.

The distance between São Paulo City and Campinas is 59 miles or 95 km. It takes about one and a half hour driving by car and two full hours by bus.



## Arriving at UNICAMP

The most suitable airports for your arrival are Guarulhos Airport (GRU - Cumbica) and Congonhas Airport (CGH) in São Paulo City and Viracopos Airport (VCP) in the vicinity of Campinas.

All three airports are linked to Campinas through bus (ônibus) service. You should take the bus LIRABUS, which will bring you to the Terminal Rodoviário de Campinas (Campinas Bus Station). From there, we recommend that you take a taxi or a ride-hailing service to your accommodation. In Brazil, the most commonly used apps for local transportation are Uber and 99. They are cheap and reliable.

- Guarulhos Airport (GRU) to Campinas (Bus Station) - R\$47,75
- Congonhas Airport (CGH) to Campinas (Bus Station) - R\$41,95
- Viracopos Airport (VCP) to Campinas (Bus Station) – R\$4,95

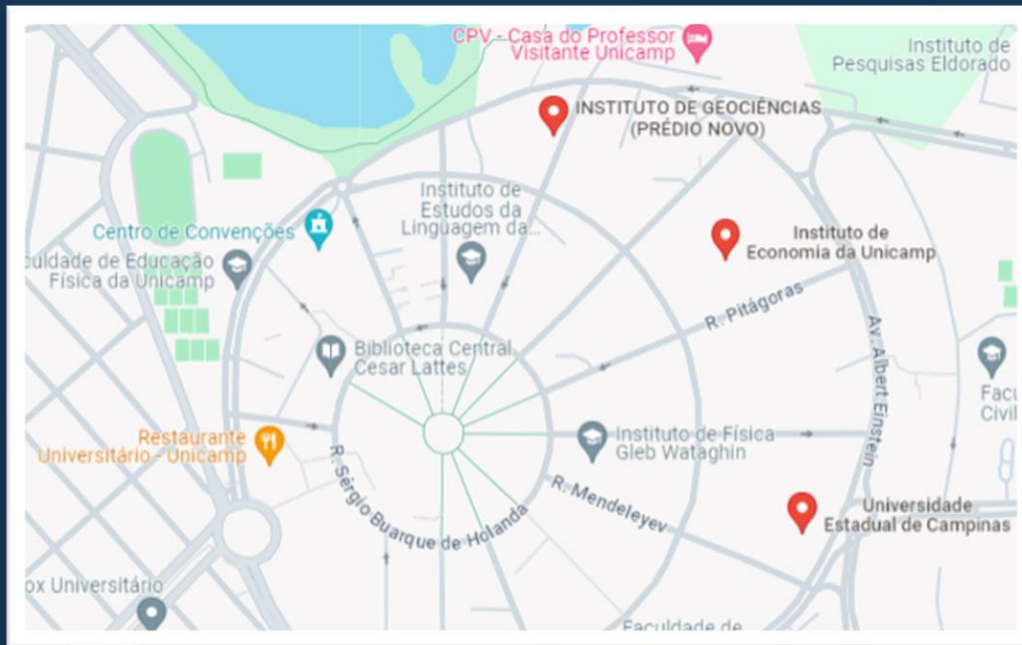
<https://www.lirabus.com.br/servicos/translados/>

[For more information you can check the airports websites](#)



# The Campus of the University of Campinas

Classes will take place at the Instituto de Geociências (IG – Institute of Geosciences) and at the Instituto de Economia (IE – Institute of Economics), both located in the main campus of the University of Campinas.



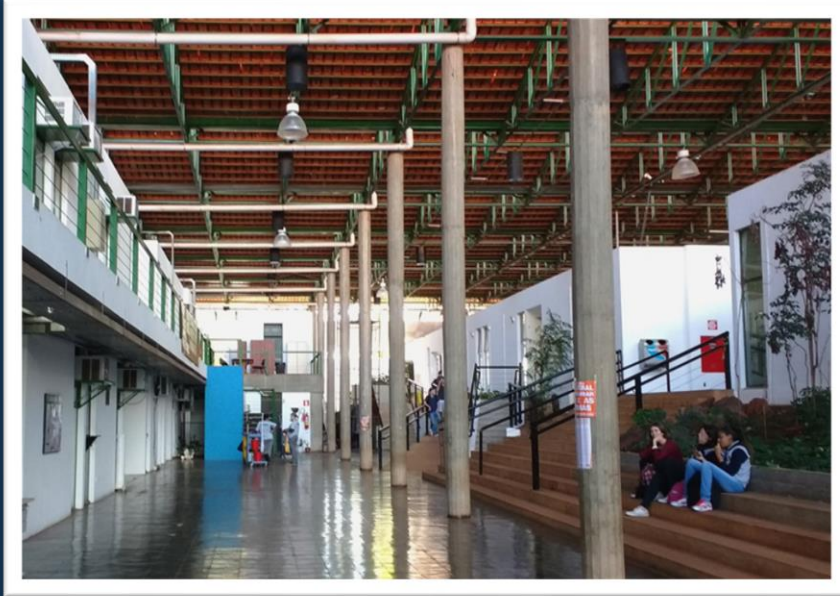
## Instituto de Geociências (IG), UNICAMP

Address: R. Carlos Gomes, 250 - Cidade Universitária, Campinas – SP.



## Instituto de Economia (IE), UNICAMP

Address: Rua Pitágoras 353, Cidade Universitária Zeferino Vaz, Campinas, SP.



Instituto de Economia (IE), UNICAMP

Address: Rua Pitágoras 353, Cidade Universitária Zeferino Vaz, Campinas, SP.



# Accommodation

In Barão Geraldo there is a robust Airbnb market due to limited hotel options. We strongly recommend students to explore Airbnb options around campus, which will make transportation much easier (often within walking distance) and offer more attractive prices.

**Click here** to check out this option.

Other good websites for finding accommodation are Booking.com and Trivago.

We encourage students to stay close to each other, facilitating social integration and transport sharing when needed. We have created a dedicated WhatsApp group for general communication purposes. Join **here**.

## **For hotels in Barão Geraldo, check the following options:**

1) Casa do Professor Visitante (CPV) [books quickly, don't get disheartened]

ADDRESS: Av. Erico Veríssimo, 1251 – Unicamp/Barão Geraldo

ROOMS FROM: R\$ 220,00

Distance from IG/Unicamp: 280 m (walking distance)

<https://www.funcamp.unicamp>

2) Matiz Barão Geraldo Hotel [also books quickly]

ADDRESS: Av. Albino José Barbosa de Oliveira, 1700 – Barão Geraldo

ROOMS FROM: R\$ 291,00.

Distance from IG/Unicamp: 2,1 km

<https://matiz-barao-geraldo-hotel-campinas.hotel-ds.com/pt/>

**For hotels beyond Barão Geraldo and in downtown Campinas, check the following options:**

1) Victoria Express Dom Pedro Campinas

ADDRESS: Rua Heitor Ernesto Sartori, 555 – Center Santa Genebra, Campinas - SP, 13080-657, Brasil

ROOMS FROM: R\$ 351,00

Distance from IG/Unicamp: 6,3 km

<https://www.vitoriahoteis.com.br/contato>

2) Hotel PrimeInn

ADDRESS: R. Luiz Oswaldo Astusi, 261 Hotel Primeinn, Campinas, CEP 13087-557, Brasil

ROOMS FROM: R\$ 219

Distance from IG/Unicamp: 5 km

<https://reservas.hotelprimeinn.com.br/contato>

3) Rio Hotel By Bourbon Campinas

ADDRESS: Rua Estácio de Sá, Campinas, CEP 13080-010, Brasil

ROOMS FROM: R\$ 330

Distance from IG/Unicamp: 6,6 km

<https://www.bourbon.com.br/hotelrio/rio-hotel-by-bourbon-campinas>

4) Ibis Styles Campinas Alphaville

ADDRESS: Rua Embiruçu, 300, Campinas, CEP 13098-320 , Brasil

ROOMS FROM: R\$ 249

Distance from IG/Unicamp: 10,1 km

Hotels are plenty in the broader region of Campinas. However, transportation (via Uber, 99, or regular taxi) will be time consuming.

The most trendy and lively neighborhood of the city of Campinas is Cambui. Those of you wanting additional excitement and significant culinary choice may try it. It is worth going for evening outings and weekends.

# Transportation

## Bus

From Campinas Bus Station (Terminal Rodoviário de Campinas) to Terminal Barão Geraldo, take the bus number 331 (unavailable on weekends).

From Terminal Barão Geraldo to UNICAMP, take the bus number 329.1 or 337.

Tickets: R\$4,95

You should download the App Transurc Smart to buy the tickets. It is not possible to buy it on the bus:

<https://www.transurc.com.br/informacoes/app-transurc-smart/>

## Private Transport

- a) Uber app;
- b) 99 app;
- c) Phones to order taxi in Barão Geraldo: (19) 3289-3300, (19) 3289-4995

We strongly recommend the transportation apps. They are quick, reliable, and relatively cheap. Buses can be dicey.

The knowledge of foreign languages beyond campus is often limited. This makes the use of public transportation occasionally difficult.

# Your Fellowship

You will receive a total of **12 daily allowances** for attending the Winter School, at the **daily value of 340 Brazilian Reais**.

Students that live in Campinas will receive 10 daily meal allowance of 63 Brazilian reais, limited to school days.

The Brazilian real, or 'reais' in Portuguese (sign: R\$), is the official currency of Brazil. It is not possible to use any other currency in the country. The exchange rate in April 2024 is as follows:

- 1 US dollar = R\$ 5,15
- 1 euro = R\$ 5,50

**Important:** The daily allowances will be provided upon presentation of your outbound flight boarding pass to the school's organizing team.

The total amount of the daily allowance will be transferred to a bank account in Brazil. For those who don't have a bank account in Brazil, we highly recommend opening an account with companies such as Wise, Nomad, and Revolut which do not charge fees. Funds can be transferred to such accounts.

If you are unable to open such an international account, you can still receive the total amount of per diems in cash at the University's secretary at Instituto of Geociências during the first day of registration.

**Remember:** The use and management of this allowance for transportation, meals, and accommodation during your stay will be at your discretion.

# Contact information

Organizing team:

[insyspo@unicamp.br](mailto:insyspo@unicamp.br)